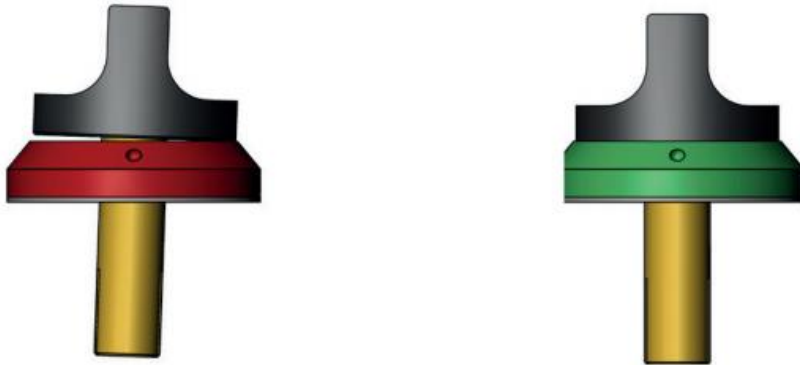


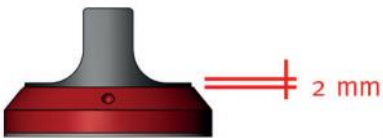
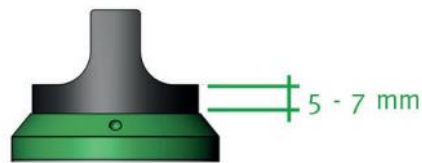
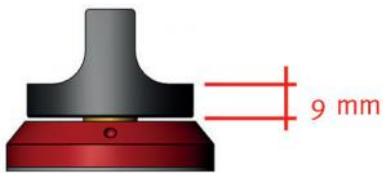
PITT Control knob scale adjustment

After a PITT cooktop is installed the control knobs must be checked for smooth and free motion when depressed and turned. They should “pop” back up after this and the ignition clicking will subside. If they do not, 1 of 2 scenarios will be the cause:

Check the following images and refer to the installed unit to identify the misaligned scale:



Scenario 1



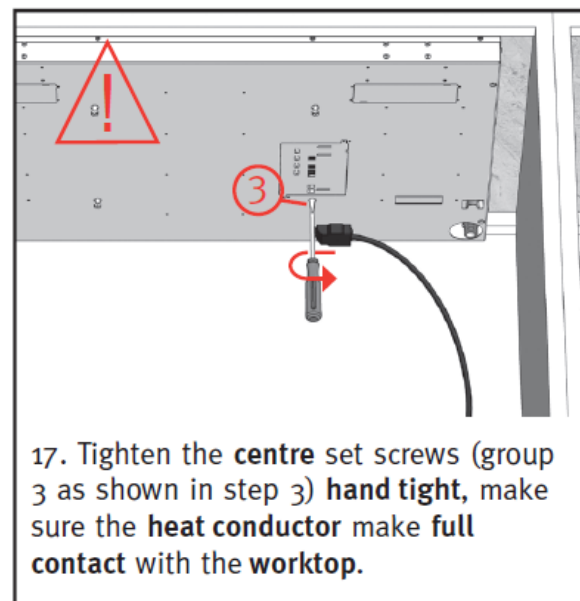
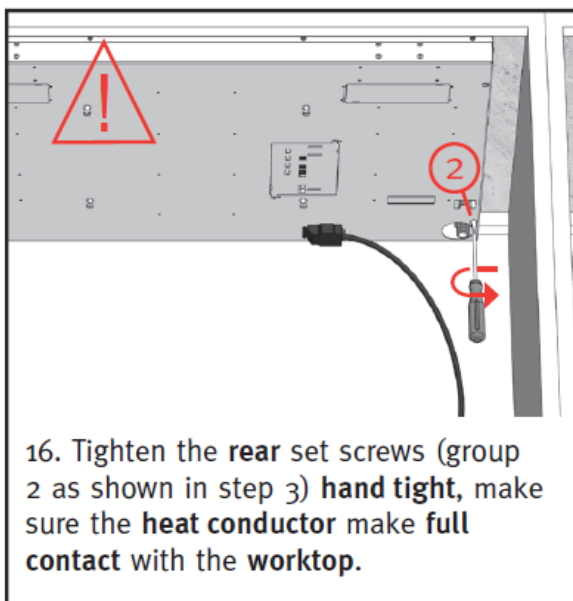
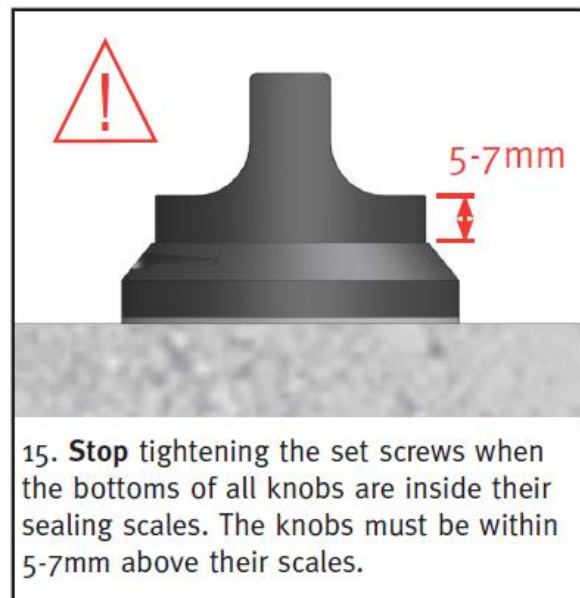
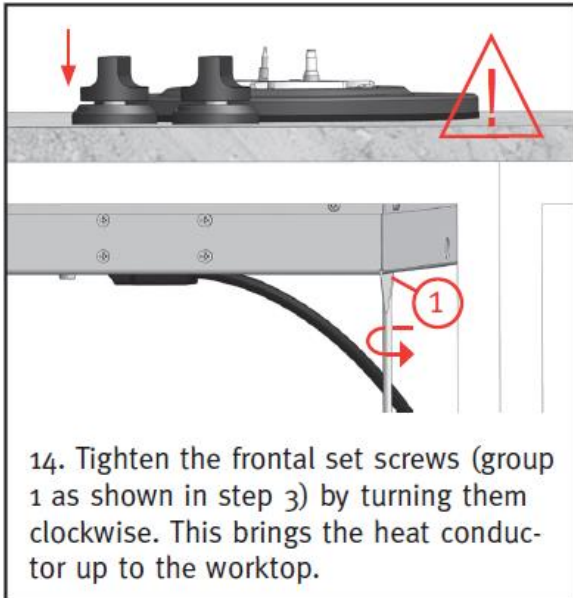
Scenario 1



Scenario 2

Scenario 1:

The chassis of the cooktop is overtight or lopsided – **Refer to installation steps 14-17** – Loosen the adjustment screws and re-tighten gently & evenly until the control knobs are sitting as per the “green” examples above.

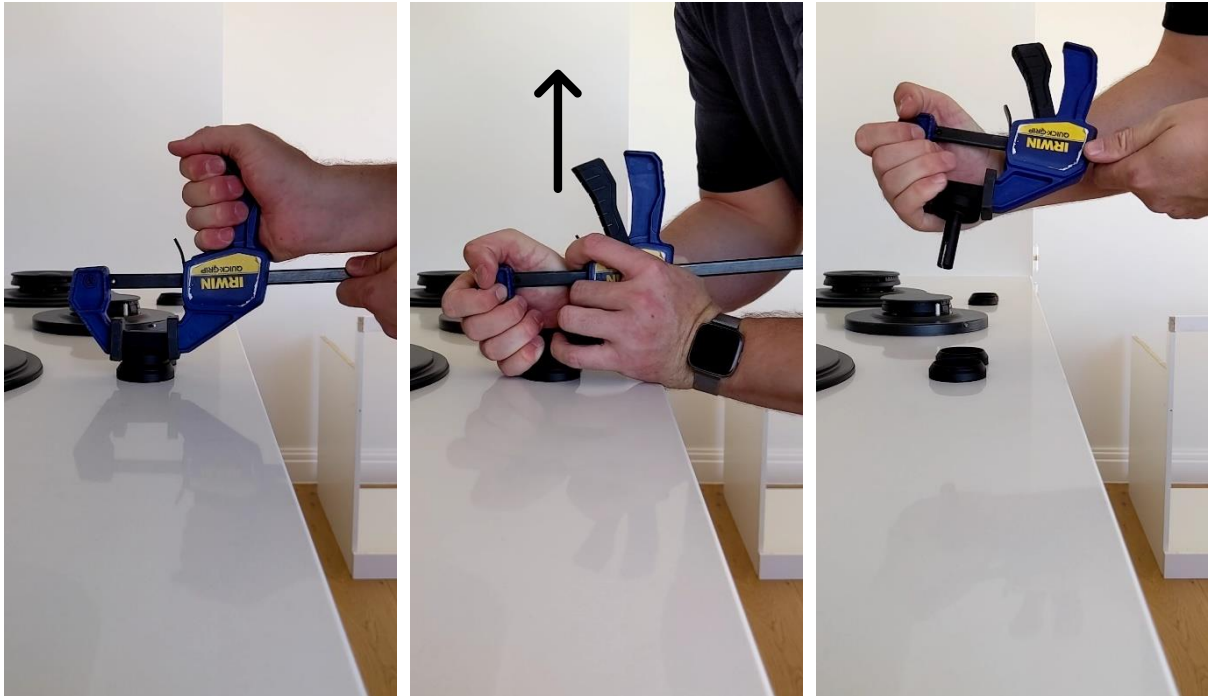


A correctly adjusted cooktop's control knob:



Scenario 2:

The chassis of the cooktop is aligned correctly, but the scale below the control knob is not. To amend this, you must remove the control knob – Easily done with a firmly clamped pair of Irwin quick-grips or similar and a strong upward pull. ****Do not jerk the knob side to side, this will damage the unit****



Next you will need to gently pry the scale from the counter – If done slowly with a flathead driver wrapped in cloth, the adhesive pad will be reusable. Once free, follow the installation tip [HERE](#) to align and re-adhere.